



发布  
中国纺织信息中心  
国家纺织产品开发中心  
支持  
中国流行面料工程  
CNCSCOLOR®  
战略合作  
国家纺织产品开发基地  
中国时尚同盟  
WGSN  
中国纺织服装品牌园

Released By:  
China Textile Information Center  
China Textiles Development Center

Support:  
Fabrics China  
CNCSCOLOR®

Cooperate With:  
Fabrics China Pioneer Plants  
China Fashion Alliance  
WGSN  
China Fashion Creative Valley

AUTUMN  
WINTER

# 17/18秋冬中国纺织面料流行趋势 FABRICSCHINA TREND A/W 17/18

## 关联 / Association

世界变化的节奏已经超出人们的预期，科技的迅速发展颠覆了我们看待世界的目光，触发了我们与世界新的关联。

“关”即关系，“联”即链接。未来与传统，过去与现在，人与自然，内在与外在，原本处于矛盾关系的两个方向在新的时代环境下产生了链接，碰撞出这一季新鲜而有趣的趋势主题。

The beat of the world has surpassed our expectations while the rapid development of science and technology constantly challenges our view of world, which trigger new associations between the world and us.

Focused on both “interrelation” and “connection”, we link future and tradition, past and present, human and nature, inner and outside; combine opposite sides together in the new circumstances, so to create this season’s fresh and interesting concept.

时尚概念区：7.1H / 正装趋势区：6.1H / 女装趋势区：8.1H  
/ 休闲装趋势区：7.2H / 辅料趋势区：4.1H

# Future Intelligence



CNCSCOLOR\* 151 30 22



CNCSCOLOR\* 160 20 07



CNCSCOLOR\* 028 65 09



CNCSCOLOR\* 011 50 34



CNCSCOLOR\* 131 30 19



CNCSCOLOR\* 024 55 00



CNCSCOLOR\* 122 40 27



CNCSCOLOR\* 034 60 27



CNCSCOLOR\* 120 20 12



## 智存未来

科技进步正在切实改变人们的生活方式，人工智能、虚拟现实、可穿戴设备的极速发展促使我们不断打破传统思维，颠覆着未来的消费、学习、娱乐、创造等方面；而经典的文化艺术以其深厚的底蕴反哺科技，带给科技无限灵感，两者冲突之下的结合创造出新颖的服装风格与面料外观。

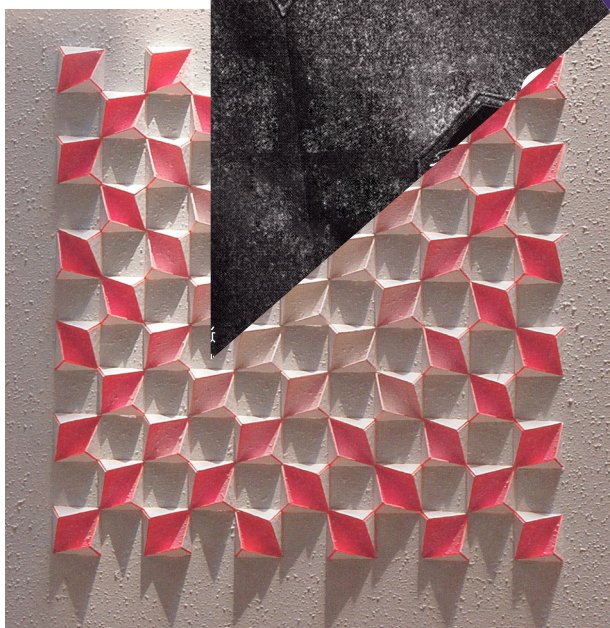
色彩具有强烈的冲突感，稳重的海军蓝、深厚的酒红、柔和的驼色与极具未来感的太空银、电子蓝并列存在，跳跃的鲜红和金黄色带来十足的运动气息。

羊毛精纺、精致的华达呢和人字纹呢料，打造奢华复古的优雅工业感风格；羊毛印花工艺的进步为面料带来了低调丰富的图案效果；亮光涂层或高光覆膜技术带来强烈的科技感外观，用于复古格纹图案的表面；金银粉涂层或磁控溅射工艺带来太空感的金属光泽，液态水润光泽与仿皮革的柔和微光效果同样重要，适用与不同领域。

Science development is absolutely changing our lifestyle. Burgeoning fields such as artificial intelligence, virtual reality and wearable devices continuously break our traditional idea and overturn existing ways of consumption, learning, entertainment and creation. While the profound connotation of classic culture also nurtures modern technology by providing constant inspiration. This conflicting combination generate the season's original fashion style and fabric design.

A palette of intensive and contrasting colors. Steady navy blue, dense burgundy, soft camel along with futuristic space silver and electric blue; bright red and golden yellow bring dynamic sense of sports.

worsted wool, fine gabardine and herring-bone wool express elegant industrial style of luxury and retro taste; the development of woolen printing technique create a various yet low-key pattern effect; glossy coating or high-light lamination adds strong high-tech flavor to retro plaid patterns; space metallic luster made by gold-silver powder finish or magnetron sputtering process, as well as soft liquid blink and leather imitated glimmer, perform perfectly on different categories.





# Symbiosis Art

## 共生艺术



人类的自我发展似乎一直以破坏自然为代价，而灾难的频发促使我们持续反省。人与自然如何共生？减少资源浪费，循环利用，创造可持续性发展的未来是唯一选择。接受来自自然的礼物，原生态审美持续升温带来丰富的自然肌理、艺术化的残破美学以及质朴粗糙的服装与面料风格。

取材自然世界的丰富色彩，降低彩度以体现质朴的原生态美感。矿物色、沙石色、蒙上灰尘的粉色、被雾霭笼罩的蓝色，以略微陈旧的和偏暗的姜黄色做点缀。

提花或烂花工艺形成人造的精致磨损效果；棉布、丝绒或皮革上模拟牛仔的水洗褪色外观；模拟手工编织纹理，粗纱线，拉菲草、亚麻等天然质感的材质点缀是重点；运用植绒、五彩纱线，或是烂花等形式模仿氧化的锈色表面图案；回收再造外观，粗糙的表面效果，撕裂与破损感；超大复古的格子花呢；椒盐效果的混色粗花呢；长毛绒面料的大量运用，灯芯绒等做旧的轻起绒织物的回归。

The development of human society is always at the expense of nature destruction, and frequent disasters make us constantly examine ourselves — how to live in a harmony with nature? The only right way seems to reducing the waste of resources, implementing recycling utilization and creating a future of sustainable development. To appreciate what we get from the nature and enjoy the various natural textures, artistic incompleteness and plain, rough fashion style brought by the continuous heat of "primitiveness".

Exuberant colors from natural, and to create a simple, original beauty. Mineral and sand color, dusty pink, misty blue with slightly weathering red and dusky ginger as ornament.

Delicate artificial worn effect made by jacquard or burnt-out process; simulating the fading effect of washed denim on cotton, velvet or leather fabric; Hand-woven structures, ornament made by natural material such as roving, raffia and linen is the key point; rusty-like surface patterns created by flocking, melange yarn or burnt-out process; recycling utilization appearance, rough surface effect, tearing and ripped design; retro large scale tartan plaids; mottled tweeds; plush fabric can be seen everywhere, while light napping fabric such as corduroy comes back.



CNCSCOLOR\* 035 60 09



CNCSCOLOR\* 011 35 33



CNCSCOLOR\* 152 20 12



CNCSCOLOR\* 021 35 11



CNCSCOLOR\* 012 60 11



CNCSCOLOR\* 114 65 15



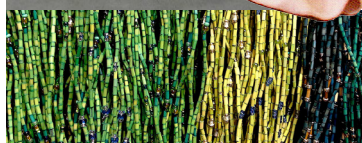
CNCSCOLOR\* 031 50 22



CNCSCOLOR\* 121 30 10



CNCSCOLOR\* 040 20 02





# BALANCE PHILOSOPHY

## 平衡哲学

信息过载使我们的个人生活空间越来越狭窄，我们既需要外在生活的便利也希望能有内在呼吸的空间。掌握内在与外在的平衡关系将成为我们未来每个人的功课。探索内在自我，在快速变化的世界寻找心灵的平静，放慢生活与消费节奏，节制欲望，放弃对性别的执着。舒适、简约而具体量感的设计，打造一种新的奢华风格。

色彩安静而低调，表达内敛与节制的情绪，各种明度的灰色调诠释了性别中立的定位，柔和的驼色令人舒适放松，含灰的蓝色和粉色平衡了整体较低的彩度。

真丝、羊驼毛、羊绒与羊毛的混纺打造奢华细腻的触感；针织双面呢，蓬松而轻质，适合塑造量感造型；轻质奢华的高支羊毛精纺；细腻的压褶结构或精致的几何小提花；弹性精毛纺或针织毛纺增添了舒适度；拉绒和起绒涂层为简约低调的色彩带来质感；桑蚕丝、有光粘胶、有光醋酸纤维打造低调的光泽感；空气层面料的应用带来舒适的运动风貌。

Information overload has narrowed our individual space. Of course we need the outside convenience, but also except to keep our inner space; so how to balance the outside and inner space would become an important subject in the future. Try to explore our inner self, seek peace of mind in the changing modern society, slow down the pace of life and consumption, moderate your material desire and abandon attachments to your gender. Designs of comfort, brief, and adequate volume are creating a new luxury trend.

Quiet, understated colors express restrains and moderation; multiple shades of grey for a neutral orientation; cozy, soft camel; grayish blue and pink balance the low saturation of the whole group.

Silk, alpaca, cashmere and wool blend bring a luxury and smooth touch; fluffy and light knit double-faced woolen is suitable to a volume shape; luxury airy high-count worsted wool; delicate pleating structure or exquisite geometric dobby fabric; comfortable stretch wool or knits; brushed and napping finished enrich the texture of understated color design; mulberry silk, luster viscose and acetate fabric glittering in a soft way; the application of scuba fabric infuses comfortable sporty touch into this story.



CNCSCOLOR® 038 40 01



CNCSCOLOR® 031 50 09



CNCSCOLOR® 035 66 07



CNCSCOLOR® 015 83 05



CNCSCOLOR® 024 61 00



CNCSCOLOR® 036 90 01



CNCSCOLOR® 104 75 07



CNCSCOLOR® 012 45 12



CNCSCOLOR® 008 30 00

本色彩发布所展示的色彩编号取自  
最新的CNCSCOLOR®色彩体系。这里  
给出的CNCSCOLOR®色彩可能与  
CNCSCOLOR®鉴定的色彩标准有所  
差别。为确保获取色彩的准确性，  
请参照最新出版的CNCSCOLOR®时  
尚色卡系列产品。CNCSCOLOR®及  
CNCSCOLOR®色彩编号的知识产权  
归属中国纺织信息中心。





# 汇融时光 Merging Time



CNCSOCOLOR® 053 35 08



CNCSOCOLOR® 030 30 05



CNCSOCOLOR® 036 60 10



CNCSOCOLOR® 128 20 12



CNCSOCOLOR® 008 20 12



CNCSOCOLOR® 100 35 12



CNCSOCOLOR® 049 50 02



CNCSOCOLOR® 056 20 01



CNCSOCOLOR® 010 30 27

The color numbers coded herein are from CNCSOCOLOR® System for Fashion. The printed colors may not meet CNCSOCOLOR® standards accurately, please refer to the original CNCSOCOLOR® standard color cards for accuracy.

The property rights of CNCSOCOLOR® System and its color codes are reserved by China Textile Information Center.

历史与传统是文明发展的见证，那些古老的、经典的存在，是时光的沉淀，是历史长河中的瑰宝。站在过去与未来的交叉点，用现代的审美和需求重新解构经典，融合多个时代的特征，发扬精益求精的工匠精神，打造华丽而有趣的后复古时代风格。

一系列低明度的色彩奠定了这一主题沉稳厚重基调。高贵的酒红色、浓烈的绛红、午夜蓝和孔雀蓝创造了优雅古典的氛围，点缀其中的裸金色增添了更多华丽感。

以欧洲古典壁纸或家纺装饰品为灵感的提花或羊毛印花；压花、烂花或经过拉绒处理的提花，创造多样的花式天鹅绒效果；带有金属光泽的花式纱线形成微微闪烁的光泽；超轻粗花呢；金属箔印花；色彩低调的冬季蕾丝；巴洛克风格的提花和刺绣，金银丝的加入增加了华丽感；毛纺大提花结合轧光工艺，打造若隐若现的奢华感。

History and tradition is the witness of our civilizing process, those ancient, classic elements are the deposition of long past and treasure among human heritage. Standing in the intersection of past and future, designers now deconstruct classics with modern aesthetic and demand, to merge different traits from multiple times and to pursue craft spirit to complete this gorgeous, and interesting Post-Vintage style.

A palette of low brightness colors set a steady and profound tone for this story. Noble burgundy, thick magenta, midnight blue and brilliant blue create a classic and elegant emotion; interspersed beige gold adds more luxury taste.

Jacquards and woolen printings inspired by classical European wallpaper or home textiles; embossing, burnt-out or brushed jacquards create diverse figured velvet effects; glittering look made by metallic luster fancy yarns; extra-light tweeds; metallic foil printings; winter laces in quiet colors; baroque style jacquards and embroideries; gorgeous metallic yarns. Combination of woolen spinning jacquards and calendaring process forge a gleaming magnificence.

